

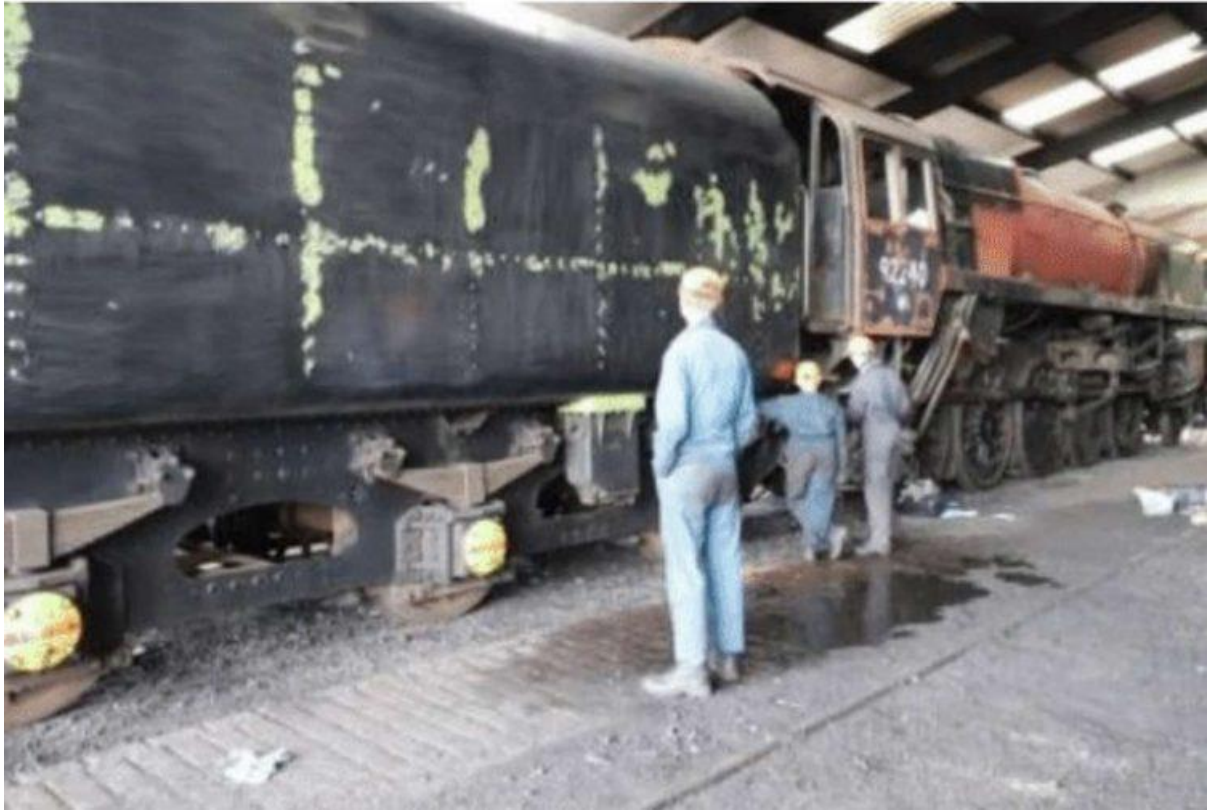
92240 goes Shed Hopping



Firstly, apologies to an error in our previous article, where photo contributions came from Ken Upton, Tom Parsons, Mark Wilson, Martin Payne and Tom Newble.

If you are interested in joining the team or wanting to show your support to the overhaul and restoration of 92240 then please email Andy at Andy.Taylor@bluebell-railway.co.uk or awakethegiant@outlook.com. If you wish to donate to the fundraising campaign to restore and overhaul 92240, all donations are gratefully received and appreciated by the 'Awake the Giant' Team and donations are able to be made here, <https://www.bluebell-railway.com/trust/make-a-donation/>

In this article, photo contributions come from Ken Upton, Tom Parsons, Mark Wilson, Martin Payne, Duncan Barrows, Phil Wilson, Andy Taylor and Tom Newble.



92240's Progress

92240 has been shed hunting since our last article, moving in and outside of 'Steamworks!' and was based in the maintenance shed for 'Bluebell on Parade'. Since our last update, 92240 has continued to have work undertaken on the tender primarily. Work has continued on the outside of the tender, with more rubbing down and filler then being applied, these are the mint green patches on the locomotive currently.



Our 9F members, the youngsters of the Bluebell Railway have recently worked with us. On one of their meetings, recently, they helped to rub down the steps into the cab and tender and help apply filler and primer where necessary. They then joined the team again at Bluebell on Parade, where the

current work on 92240 was showcased to the public and a heavy footfall also visited the footplate, which proved very, very popular indeed.



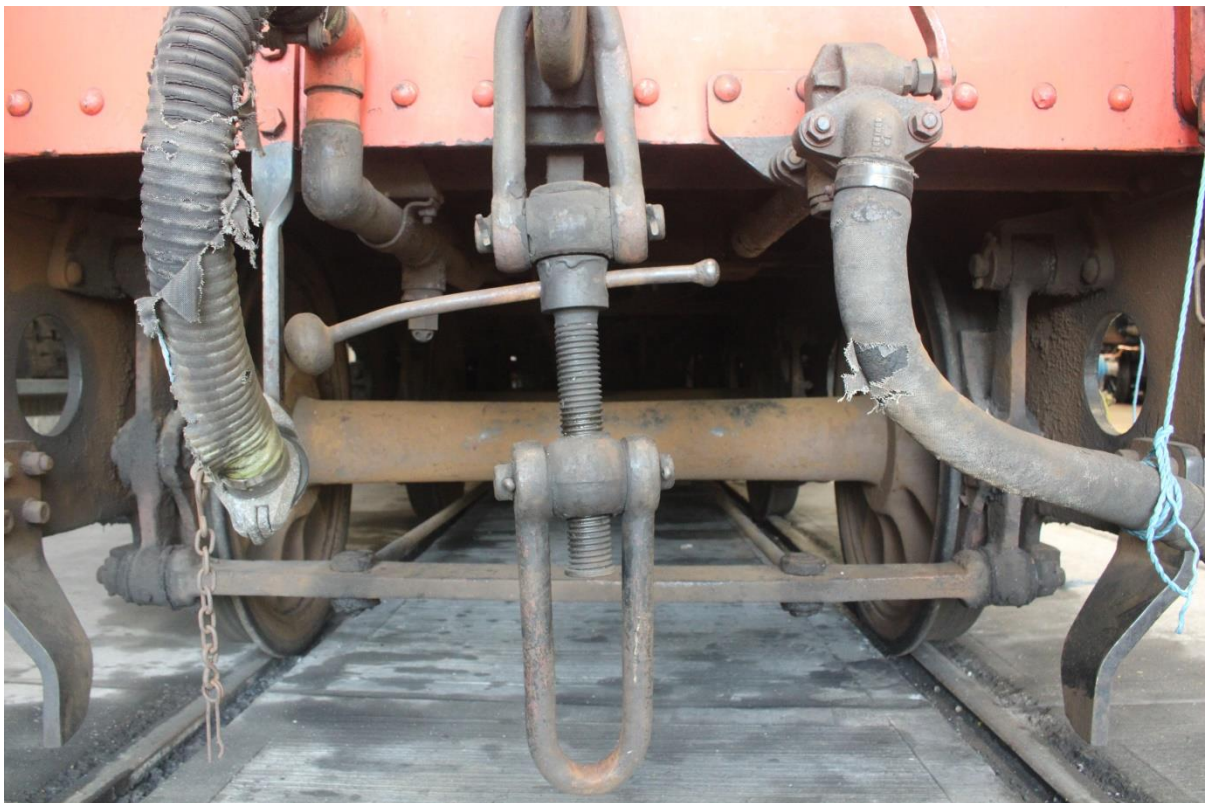


Other recent work, has included loosening the running plate bolts, this is to reduce the amount of work and help have some of the front end prepped for the move into the workshop, more about this will come in future articles. Work has also continued on wire brushing and cleaning the rust within the water tanks, below is an image of the PPE working well, with Andy!





Under the tender, 92240 had a water scoop, for when 92240 ran on the mainline and would collect water through the water troughs that laid along certain lengths of track. As the Bluebell line does not have water troughs, the decision was to have this removed from the locomotive however the team, whilst removing this and continuing to work on the tender, is to allow 92240 be filled either by the water cranes through the top of the tender or to fill, in the yard, at low level.



Working Parties

The team's working parties, led by Andy and Martin will be held on every second Saturday of each month. If you wish to be involved in 92240's overhaul and join the working parties, then please do get in touch.

We have been increasing the amount of events that the 'Awake the Giant' team have been attending and promoting 92240.

92240 Makes the News

92240 has recently featured in and on a number of railway publications, including Bluebell Times, Bluebell News, Rail Advent and Steam Railway magazine. In general, the response back from the public reading these articles has been amazing and very supportive and in turn, this has also boosted the financing of 92240's overhaul.

Merchandise

Ken has been busy behind the scenes ordering and creating new 'Giant' lines of merchandise that is now available to buy, from the stand and the Bluebell shop. Our most recent additions to the current merchandise range include, rulers and coasters.



Giant Gazette

Mark has been working hard behind the scenes to get issue two ready for publication and will be available very soon, be sure to grab your copy. Our new subscription service to the 'Giant Gazette' has proven to be very popular to both, guests and working members of the Bluebell Railway and has a number of subscribers. If you are interested in subscribing to this, then please email:

giantgazette92240@yahoo.co.uk

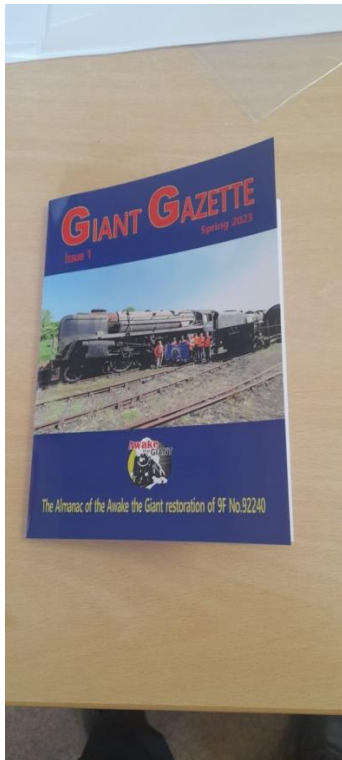


Photo Competition

Our ever popular Photo Competition is still open and has a lot of positive interest and runs until the end of the year. If you are interested in entering, then please look at the details below, or alternatively pick up a leaflet at the railway.

COMPETITION RULES, TERMS AND CONDITIONS

Categories
There are two age ranges for the 'Awake the Giant' Photo Competition

Under 15s with Parental Consent

1. 'Bluebell at its Best' (Any photo of the Bluebell)
2. 'Visitors and Galas' (Any visiting locomotives and galas)

Over 16s categories:

1. 'Bluebell in Bloom' (Any photos of the home fleet)
2. 'Visitors and Galas' (Any visiting locomotives and galas)

For All Ages
'Flying Scotsman Flies South'
(Flying Scotsman at the Bluebell in 2023)

Opens Friday 21st April 2023 (Branch Line Gala)
Closing Date is Friday 1st December 2023.

How to submit:
Entries can be emailed to Tom at awakehogiant@outlook.com

Suggested Donation:
Donations can be made via the online donation page by visiting <https://www.bluebell-railway.com/make-a-donation/> and selecting the 'Awake the Giant' appeal.
Please ensure your name is clearly stated on online entries.

Questions:
Any questions, speak to Tom N at the Branch Line Gala or email Tom at awakehogiant@outlook.com

Terms and Conditions:
Full rules, terms and conditions are online. Prizes vary for each category.

DATA PROTECTION
All data collected will be used in accordance with the Bluebell Railway's GDPR Policy. More information can be found on the Bluebell Railway website.

The Awake the Giant's Photography Competition returns for a third year and these have been proven to be very, very popular. This year we will be introducing new categories for all ages. The categories for this are;

15s and Under

- 'Bluebell at its Best' (Any photo of the Bluebell)
- 'Visitors and Galas' (Any photo representing Bluebell visiting locomotives and Galas)

16s and Over

- 'Bluebell in Bloom' (Any photo of Bluebell's home fleet)
- 'Visitors and Galas' (Any photo representing Bluebell visiting locomotives and Galas)

For Both Age Groups

- 'Flying Scotsman Flies South' (Flying Scotsman at the Bluebell Railway 2023)

All details can be found on the 'Awake the Giant' page on the Bluebell Railway's website. The competition opens on the opening day of the 'Branch Line Gala' and is running and will close on Friday 1st December 2023, with winners being announced in January 2024.

Archiving 92240

Then finally, Tom N has been working behind the scenes to start planning the new publication about 92240 but has also started building an archive of 92240 at Barry's, arrival at the Bluebell Railway and working days. If you have any materials and are willing to add them to the archive and publication, please contact Tom N at awakethegiant@outlook.com